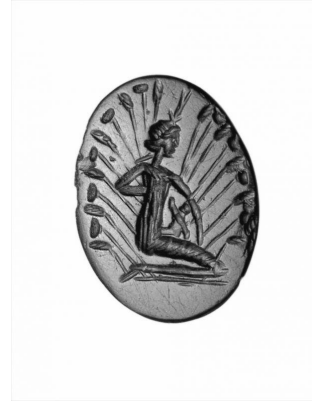


Amulet(?) gem: Isis and Horus in the papyrus nest

CBd-Number	CBd-94
ID-Number	GB-Cambridge, Fitzwilliam_CM. 14.1926
Collection	GB_Cambridge, Fitzwilliam Museum
Inventory	CM. 14.1926
References	Henig, Cambridge, no. 494; Michel, DMG, no. 30.1.a_5
Former Collections	Ridgeway Collection
Material	heliotrope
Dimensions	17 x 13 x 3 mm
Dating	2nd-3rd c. AD (Henig)
Iconography	Isis lactans; crown, double feathers; Harpocrates; clothing: garment; gesture, kneeling; plant: papyrus



Credits: by Robert Wilkins / Charlotte Attwood
Rights: © Beazley Archive, Oxford

A: Isis kneeling in profile to right, wearing a long robe, and crowned with the double feather crown (Henig: lotus-diadem). She holds the infant Horus upon her knees. They are encircled by tall stalks of papyrus.

B: Plain.

Bibliography

[Henig 1994](#), 223, no. 494.
, 30.1.a_5

Last modified: 2015-01-09 13:55:47